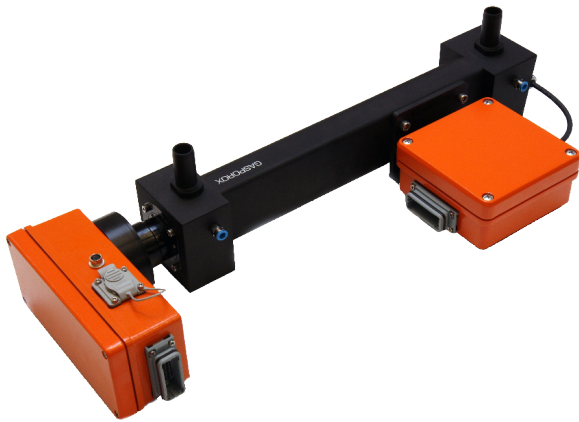


CellSpect CO₂TM



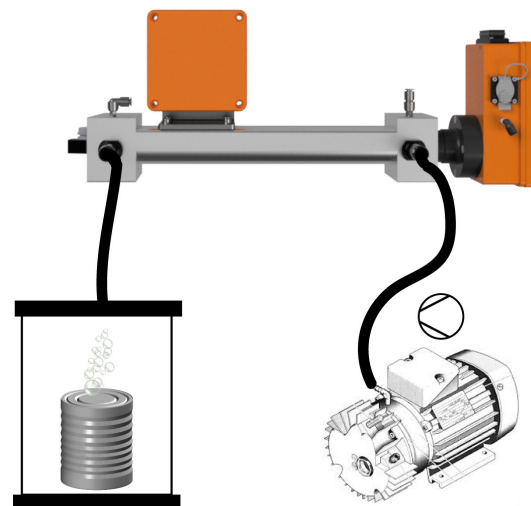
Leak testing solution for integration

The CellSpect CO₂ sensor solution is a gas measurement system for detecting low concentration of CO₂ for leak testing applications. The sensor detects extremely small holes in packages like trays, bags, canisters, and cans made by various types of material.

Technology

Gasporox sensors are based on Tunable Diode Laser Absorption Spectroscopy (TDLAS). Gasporox sensors are available for both HeadSpace Analysis (HSA) and Leak Detection (LD) and intended for integration into in-line inspection- or production lines for 100% testing and quality control.

Application example



Benefits

- Fast
- Sensitive
- Accurate
- Robust
- Easy to integrate
- Safe

General Sensor Specification

Gas:	CO ₂
Measurement range:	0 - 100 % CO ₂
Startup time:	< 1 min
Sensor IP Classification:	IP 67
Cell Volume:	129 cm ³

Dimensions

Transmitter box (HxWxD):	180 mm x 85 mm x 68 mm, 1.3 kg
Receiver box (HxWxD):	127 mm x 125 mm x 90 mm, 1.0 kg
Full setup (HxWxD):	590 mm x 220 mm x 130 mm, 6.6 kg
Gas connection diameter:	19,5 mm outer diameter

Communication interface

Modbus TCP/IP, RS485, Ethernet, Trigger input

Performance (depending on package line)

Measurement time:	Down to 5 ms
Measurement performance:	ppm CO ₂ increase is detected
Sensitivity:	1 ppm at 40 ms

Laser

Laser class: Class 1 laser product

Electrical

Primary:	100 - 240 V, 10 W AC, 50 - 60 Hz
Secondary:	18 - 30 V DC